

## ANOVA UNIVERSAL TANK MONITOR®

The Anova Universal Tank Monitor® (Anova UTM®) is an advanced and affordable, multi-input, intrinsically safe monitor that supports a wide variety of applications. With easy installation, clip-in cables, and the ability to monitor more than one tank or input, the Anova UTM helps drive better distribution profitability and customer service.

### / Works Universally.

Supports multiple communication networks, applications, and measurements.

### / Easy to Install.

Simply connect the sensor to Port A of the UTM®, and the unit immediately begins its communication cycle. With plug-and-play functionality, setup is quick and hassle-free.

### / Affordable.

Great pricing either purchased or through Anova's Hardware-as-a-Service (HaaS) subscription model. Magnetic or 3M™ Dual Lock™ mounts, with easy installation verification via mobile app.

### / 20-Year Battery Life.

Long-life battery and the ability to monitor multiple tanks or a combination of measures on a single tank. Multiple inputs support a range of sensors such as tank level, pressure, meters, and others. Backed by a five year warranty.

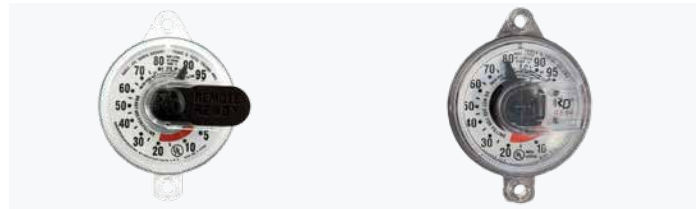


APPLICATIONS	
<b>TANK LEVEL</b>	
<b>LINE PRESSURE</b>	
<b>OPEN / CLOSED</b>	

# TANK LEVEL SENSOR OPTIONS

## R3D® GEN 3

## R3D® GEN 4



The Rochester Dial sensor is a magnetically driven dial, that is mounted onto Rochester Junior or Senior gauges. Rochester R3D® is compatible with Gen 3 and Gen 4 Rochester Remote Ready Dials. Gen 3 and Gen 4 Rochester Remote Ready Dials also offer two versions of sensor cables - Right Angle or Straight - that are compatible with both devices.

## RETAIL TANKS



The Anova 645 Sensor and Dial combination is compatible with Rochester and Taylor float gauges. It comes with the universal clip adapter for junior, screw-down, and 4-bolt gauge configurations. Additional adapters are available for snap-on and senior gauges.

## STORAGE TANKS



The Large Dial sensor is a magnetically-driven and mounted onto Rochester 4" and 8" Magnetel gauges.

## PRESSURE SENSORS



Provides reliable pressure measurements relative to atmosphere. Compatible with level sensing for a broad range of liquids (chemicals, oils, lubricants & fuels) and available in four pressure ranges: 0.2, 0.5, 1.0 or 1.5 bar - tank sizes from 1 meter to 16 meters in height. Also available as external mount (2.5 bar pressure range).

## RADAR LEVEL SENSOR



The Radar Level Sensor is a non-contact sensor that is compatible with a wide variety of liquids. It significantly lowers cost of tank monitoring from traditional Submersible Differential Pressure sensors. Taking advantage of technology advances, the sensor's radar detection technology has the capability to monitor level, location, temperature, and usage in IBCs and bulk storage tanks through the container wall, revolutionizing IBC monitoring.

# ANOVA UNIVERSAL TANK MONITOR®

## KEY FUNCTIONALITY



### UNIVERSAL SIM

Universal SIM supports multiple cellular networks (LTE CAT-M1).



### MULTIPLE, SENSOR INPUTS

Multiple inputs supporting a range of sensors including tank level, pressure, meters, and others.



### EASY INSTALLATION

- Magnetic or 3M Dual Lock™ mounting options.
- Clip-in Rochester Remote Ready® cable.
- On-site verification of installation success with LEDs. or using our mobile application to confirm receipt of data on the server.



### REPORTING

Daily reporting with configurable alarms.



### RELIABILITY

- 20-year battery.
- Rugged, sealed, all-weather construction.
- Intrinsically safe, C1/D1 and ATEX compliant.



### ERP INTEGRATION

Seamless integration with supply-chain ERP software.



### INDUSTRY EXPERTISE

Dedicated technical support with decades of experience in LPG, refined fuels, and other industries.

## TECHNICAL SPECIFICATIONS

### RADIO:

- Universal SIM supports cellular LTE CAT-M1 (North America), LTE CAT-M1 w/ 2G fallback (International).
- NB-IoT optional.
- GPS optional.

### NETWORKS:

- **North America:** One monitor communicating on ALL MAJOR networks across the US and Canada.
- **International:** Multiple networks.

### SENSOR INPUTS:

- Multiple universal pluggable inputs.
- Level, pressure, meter, cylinder change-over, digital input.

### BATTERY LIFE:

Designed for 20 years.

### REPORTING SCHEDULE:

- Daily reporting with configurable alarms.

### COMPLIANCE:

- IP66/67/x8 (case fully potted).
- FCC/IC/CE.
- Certified Intrinsically safe C1/D1; Zone 0.
- UL, ATEX, IECEx.

### TYPICAL TEMPERATURE RANGE:

-22°F to +140°F (-30°C to +60°C).

### POWER INPUTS:

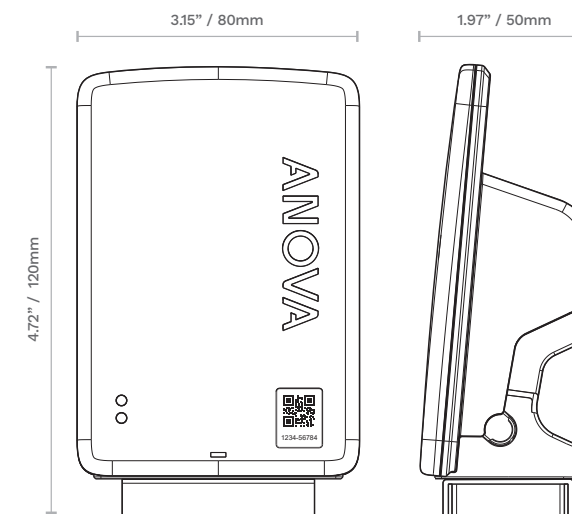
Primary lithium battery.

### MATERIAL:

Plastic, resistant to both UV and impact.

### DIMENSIONS:

4.72" x 3.15" x 1.97" (120mm x 80mm x 50mm).



Learn more at <https://pages.anova.com/UTM> and speak with an Anova expert about the Anova Universal Tank Monitor®.

# MAKEEN ENERGY

Find more information about your local MAKEEN Gas Equipment contact on [makeengasequipment.com/get-in-touch](http://makeengasequipment.com/get-in-touch) or scan the QR-code.



#### MAKEEN Gas Equipment Headquarters

Alsvej 21  
8940 Randers SV  
Denmark  
Tel +45 8644 8734  
[mge@makeenenergy.com](mailto:mge@makeenenergy.com)  
[www.makeengasequipment.com](http://www.makeengasequipment.com)  
[www.makeenenergy.com](http://www.makeenenergy.com)

Follow us on:



**MAKEEN Gas Equipment** offers a wide range of high-quality gas equipment and components along with expert guidance from the beginning to the end of your project. In that way, our one-stop shop philosophy – and many warehouses around the world – provide you with much more than just a product. MAKEEN Gas Equipment is a company under MAKEEN Energy.


**MAKEEN Energy** is a global, market-leading corporation that delivers technological solutions, equipment, and customer support to the energy industry. We employ approx. 4,000 people across 6 continents and operate in over 140 countries. With our global reach, local presence, and decades of experience, we can deliver responsible solutions that make a difference to people and planet.



+1 (866) 493 7762

[enquiry@anova.com](mailto:enquiry@anova.com)

[anova.com](http://anova.com)

 [anovasolutions](https://www.linkedin.com/company/anovasolutions)

# ANOVA

Connecting the industrial world - for better.