

ISO 9001
Certified



Torrexx™

Dry Electric LP-Gas Vaporizer

Indirect Heated *CE Marked*



algas-sdi.com

Torrexx™ is a heavy-duty, fast acting LP-Gas vaporizer which provides reliable and efficient process performance for commercial, municipal and industrial applications worldwide. Its aluminum construction and compact footprint make it light weight and easy to move and install!

KEY POINTS:

➔ **Solid-state relay for reduced maintenance**

(high-capacity models 240Kg/h–320Kg/h)

➔ **Heavy-duty contactor**

(low-capacity models 25Kg/h–160Kg/h)

➔ **98% thermal efficiency**

➔ **Corrosion-free**

➔ **Simple and compact**

➔ **No water-glycol**

➔ **Liqui-SAFE™ Valve**

➔ **Auto-restart after power interruption**

➔ **Easily fits inside cabinet**



TX100 shown

Since our first dry electric vaporizer patent in 1972, **Algas-SDI** has shipped tens of thousands of units to more than 90 countries on six continents.

Torrexx defines the industrial standard for dry electric LPG vaporizers. Heater control is through the use of a solid-state relay or robust contactor (depending on the model). In the event of a “high liquid level occurrence,” our proprietary **Liqui-Safe Valve™** prevents liquid LPG from passing downstream of the vaporizer. The valve provides visual indication of activation. This allows easy troubleshooting and assures the end-user the device is functioning properly.



Operational Characteristics

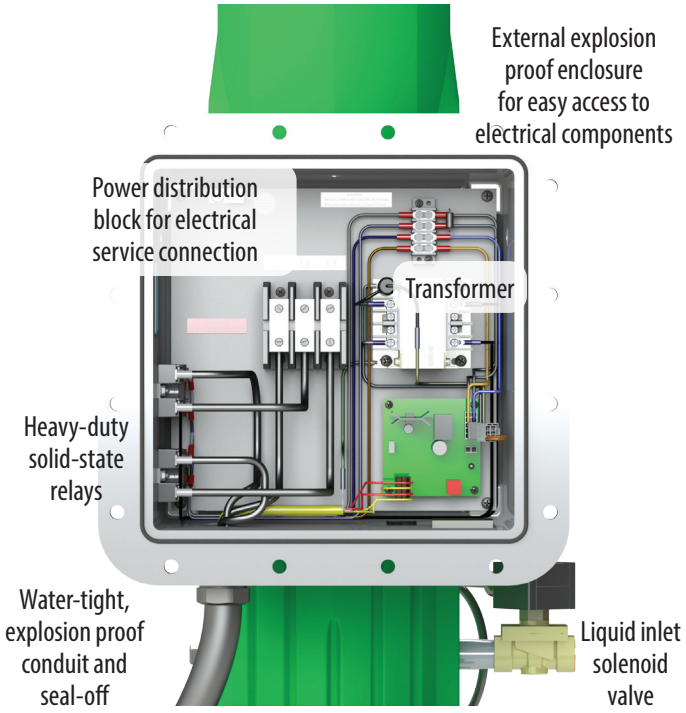
Torrex is a robust, yet simple, LPG electric vaporizer. No start/stop switches are used. When power is applied, the vaporizer is ON and ready for operation within seconds!

Heating elements are cast "in-situ" in the aluminum core. Two thermocouples housed in a common sheath directly control normal operation and provide over-temperature protection. Operational set-points are factory set.



Fusible links provide additional over-temperature protection.

Torrex is available in all common voltages. Explosion proof designs are ATEX/IECEx approved to comply with CE type Zone I applications. Hazardous area classification allows **Torrex** to be installed adjacent to a tank or building with no minimum separation requirements.



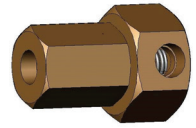
TX320 shown

IDEALLY SUITED FOR:

- Schools
- Hospitals
- Backup Generators
- Temporary Heat
- Industrial

START-UP: Less than 1 minute

Vaporization Type	Indirect / Dry Electric / Feed out														
	MODEL		TX25		TX50		TX100		TX160		TX240		TX320		
Electrical Data	VOLTAGE	PHASE	KW	AMPS	KW	AMPS	KW	AMPS	KW	AMPS	KW	AMPS	KW	AMPS	
	120	1	3.9	32.8											
	208	1	3.0	14.2	5.9	28.5	11.8	56.9	32.8	16.4	45.5				
		3													
	220	1	3.3	15.0	6.6	30.1	13.2	60.2	34.7	18.3	48.1				
		3													
	240	1	3.9	16.4	7.9	32.8	13.1	54.7	19.0	15.7	37.8	21.8	52.5		
		3													
	380	3			6.6	10.0	13.2	20.0	18.3	27.8	25.4	38.6	38.6	58.7	
	400	3			7.3	10.6	14.6	21.1	20.3	29.3	28.1	40.6	37.0	53.4	
	415	3			7.8	10.9	15.7	21.9	21.8	30.3	30.3	42.1	39.8	55.4	
	440	3						13.2	17.4	18.3	24.0	25.5	33.4	38.7	50.8
	480	3						15.8	19.0	21.8	26.2	30.3	36.4	39.9	48.0
	575	3													



Optional Economy Operation Valve:

Activates vaporizer based on tank pressure. Requires no electricity; easily field installed on TX25 – TX320.

¹ PED is per 'Module "H"'

² Vaporization capacity shown is nominal. Actual is impacted by LPG composition and pressure. If installing multiple vaporizers, contact ASDI for additional details.

Electrical Class	Hazardous Area Classification — ATEX Zone 1, Ex db mb IIB T2 Gb, Presafe 17ATEX9447X, IECEx PRE17.0073X					
Vaporizer Approvals	CE, 'PED Marked, ATEX, IECEx					
Liquid Inlet Connection	¾" FNPT threaded connection					
Vapor Outlet Connection	1" FNPT threaded connection					
²Vaporization Capacity	TX25	TX50	TX100	TX160	TX240	TX320
Kg/h	25	50	100	160	240	320
US Gal/h	12.5	25	50	80	120	160
MMBTU/h	1.1	2.2	4.5	7.2	10.9	14.5
Design Pressure	← 250 PSIG 17.2 Barg →					
Relief Valve Set Point	← 250 PSIG 17.2 Barg →					
Hydrostatic Test Pressure	← 375 PSIG 25.9 Barg →					
Shipping Weight	130 lbs 59 kg	130 lbs 59 kg	135 lbs 61 kg	145 lbs 66 kg	270 lbs 123 kg	280 lbs 127 kg
Shipping Dimensions						
Height	54" 1372 mm	54" 1372 mm	54" 1372 mm	54" 1372 mm	66" 1676 mm	66" 1676 mm
Width	19" 483 mm	19" 483 mm	19" 483 mm	19" 483 mm	26" 660 mm	26" 660 mm
Length	19" 483 mm	19" 483 mm	19" 483 mm	19" 483 mm	31" 787 mm	31" 787 mm

Algas-SDI developed its first vaporizer in 1932. Over eighty years later, we still lead the market in quality, innovation and **commitment to our purpose**. Our products allow businesses located off the gas grid or under curtailment, to operate. We eliminate downtime ensuring **workers can work and goods and services can flow to market**.



151 S. Michigan Seattle, WA USA 98108
+1 206-789-5410 | Fax: +1 206-789-5414
sales@algas-sdi.com

algas-sdi.com

